



# MP6002 LOW HEAD ROOM ROTARY PILING RIG

**Base carrier**  
Developments Ltd  
Power unit  
Rated output

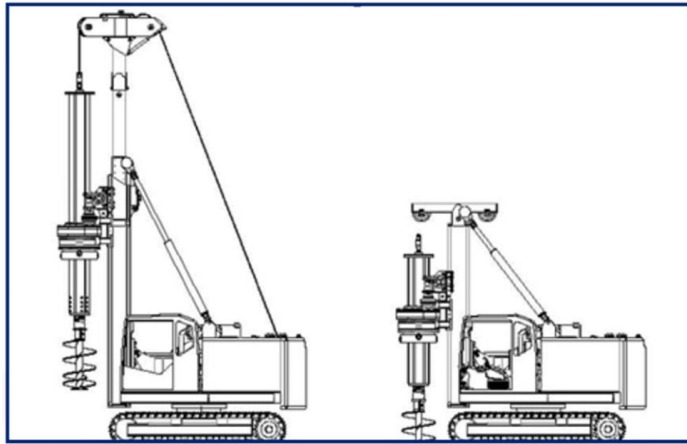
Sampierana / High Mead  
Volvo TAD52VE  
160 kW (214 HP) @ 1800 rpm

## Undercarriage

Width over tracks	2500 / 3500	mm
Track pad width	600	mm
Length over tracks	3960	mm
Clearance under machine	283	mm
Maximum tractive effort	172	kN
Travel speed	1.67	km/hr

## Hydraulic system

Hydraulic pressure (max)	320	bar
Main pump delivery	1 x 288 + 1 x 40	lit/min
Auxiliary pump delivery	1 x 27.5 + 1 x 22.8	lit/min
Pilot system pressure	18	bar



### Technical Data

• Operating Height (unrestricted)	11,350	mm
• Minimum operating height	8350	mm
• Overall length	6000	mm
• Overall width	3500	mm
• Tailswing radius	2500	mm
• Operating radius	2925	mm
• Operating weight (approx)	30,000	kg
• Ground bearing pressure (max)	290	kPa
• Ground bearing pressure (average)	150	kPa

### Rotary Drive

• Kelly torque at 230 bar	55	kNm
• Casing drive torque at 230 bar	130	kNm

### Crowd system

• Max crowd force	100	kN
-------------------	-----	----

### Main winch

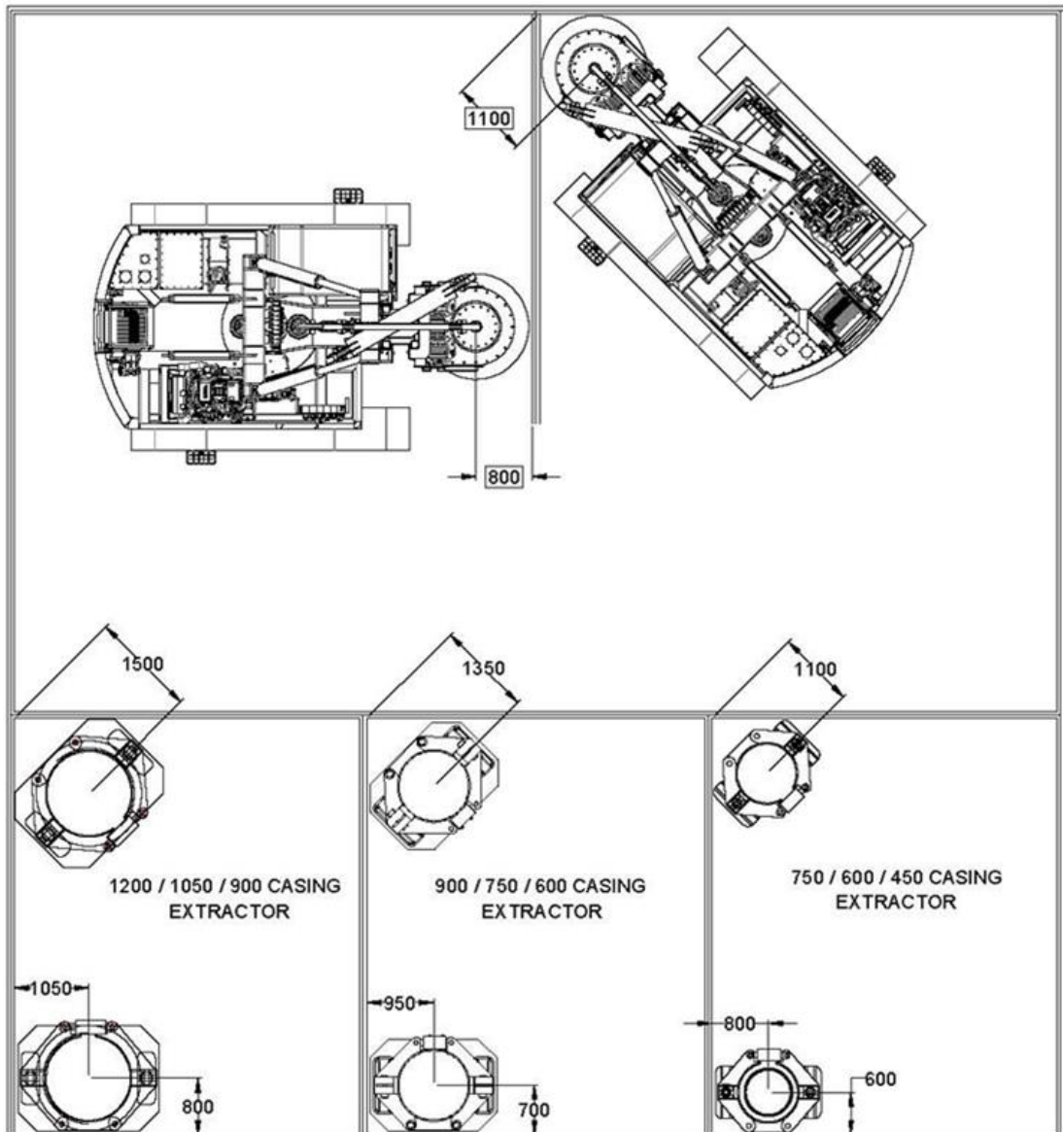
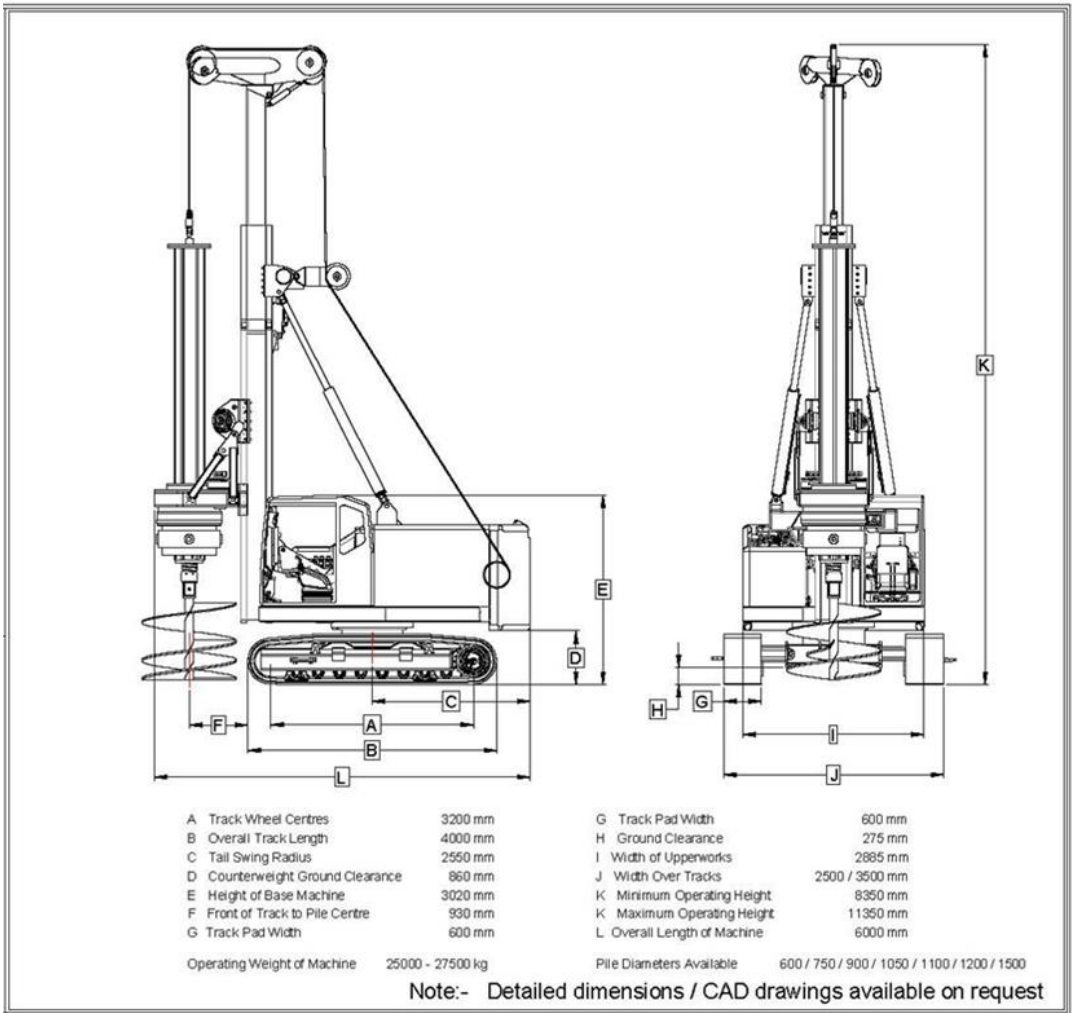
	Braden	PD17A
• Single line pull (first layer)	100	kN

### Auxillary winch

	Braden	PG06
• Single line pull (first layer)	27	kN

### Mast inclination

• Fore/aft	5	degrees
• Side/side	5	degrees
•		



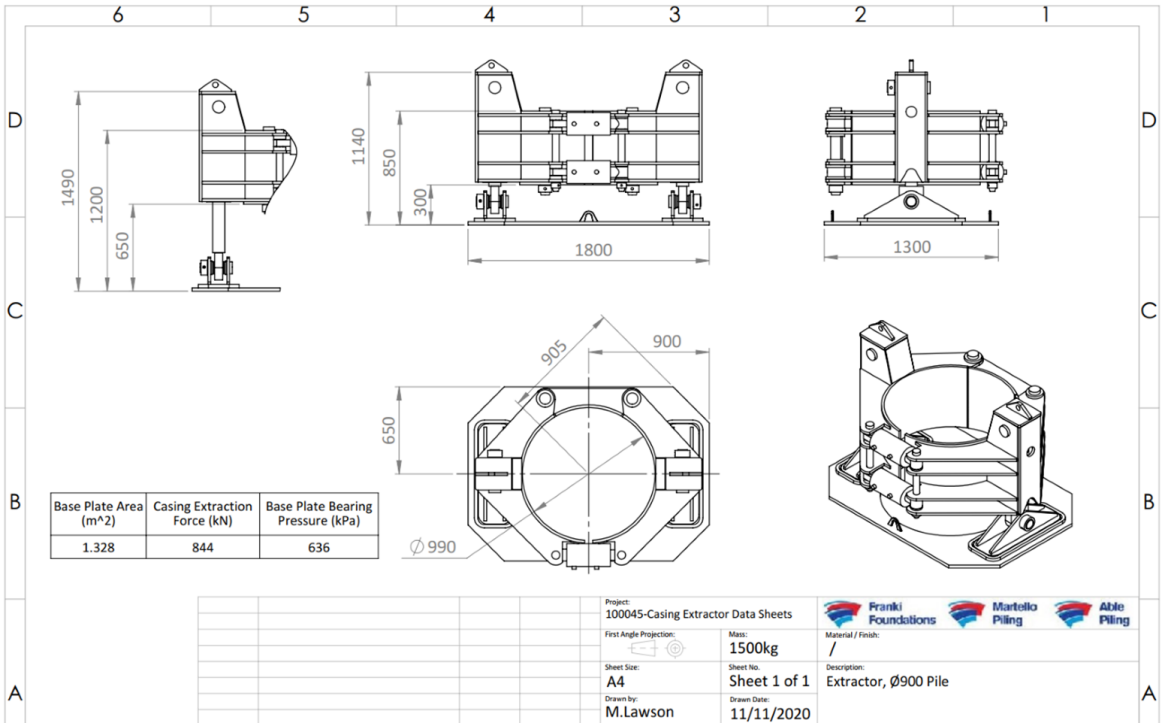
**EXAMPLE FROM SOILMEC RIG**



Drilling Depths	Kelly Dimensions	Depth		Weight		
		section x m	m	ft	ton	ton
3 parts	BL HD	3 x 8	21,0	68,9	3,1	3,1
	BL HD	3 x 10,5	28,5	93,5	3,8	3,9
	BL HD	3 x 12	33,1	108,6	4,3	4,4
4 parts	BL HD	4 x 9	31,8	104,3	3,4	3,5
	BL HD	4 x 10,5	38,1	125,0	3,9	4,0
	BL HD	4 x 13	48,0	157,5	5,3	5,4
	BL HD *	4 x 14	51,8	170,0	6,7	6,8
	FR HD	4 x 9	32,1	105,3	3,4	3,5
	FR HD	4 x 12	44,5	146,0	4,3	4,4
5 parts	FR HD	5 x 12	54,5	178,8	5,2	5,3
	FR HD **	5 x 13,5	61,5	201,8	7,6	7,7
	FR HD *	5 x 14	65,5	214,9	7,8	7,9

\* Non self-mountable kelly bar  
 \*\* Rathole dedicated kelly bar

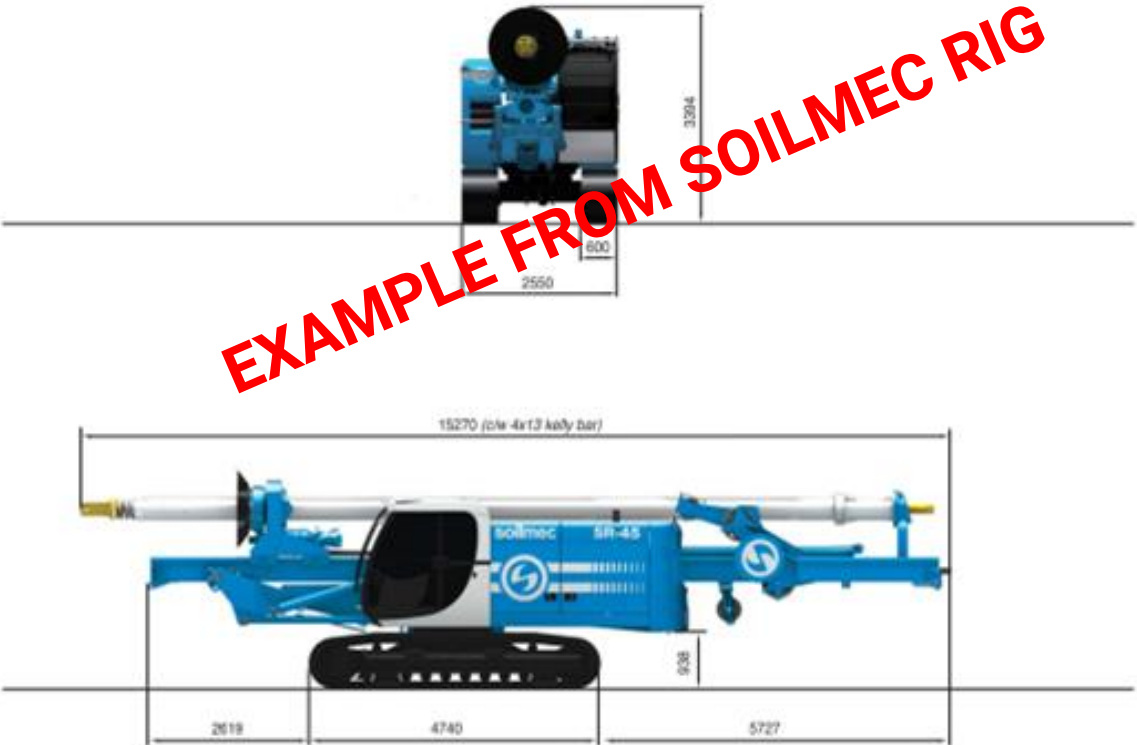
Add table that details the available tool and casing diameters  
 What style ie Clay, rock, core barrel,.....  
 Casing depths.....



Details of the optional equipment that can be hired to complement the rig

TRANSPORT, DIMENSIONS AND WEIGHTS

**EXAMPLE FROM SOILMEC RIG**



Transport configuration		
Transport width	2550 mm	100 in
Transport height	3400 mm	134 in
Transport length (w/o mast)	13050 mm	514 in
CCS Version • Transport weight c/w 4x9 kelly bar	40500 kg	89286 lb
WCS Version • Transport weight c/w 4x9 kelly bar	42000 kg	92593 lb