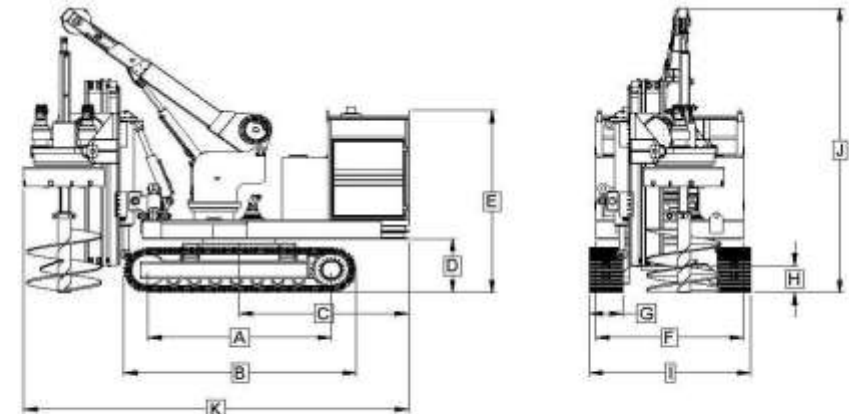
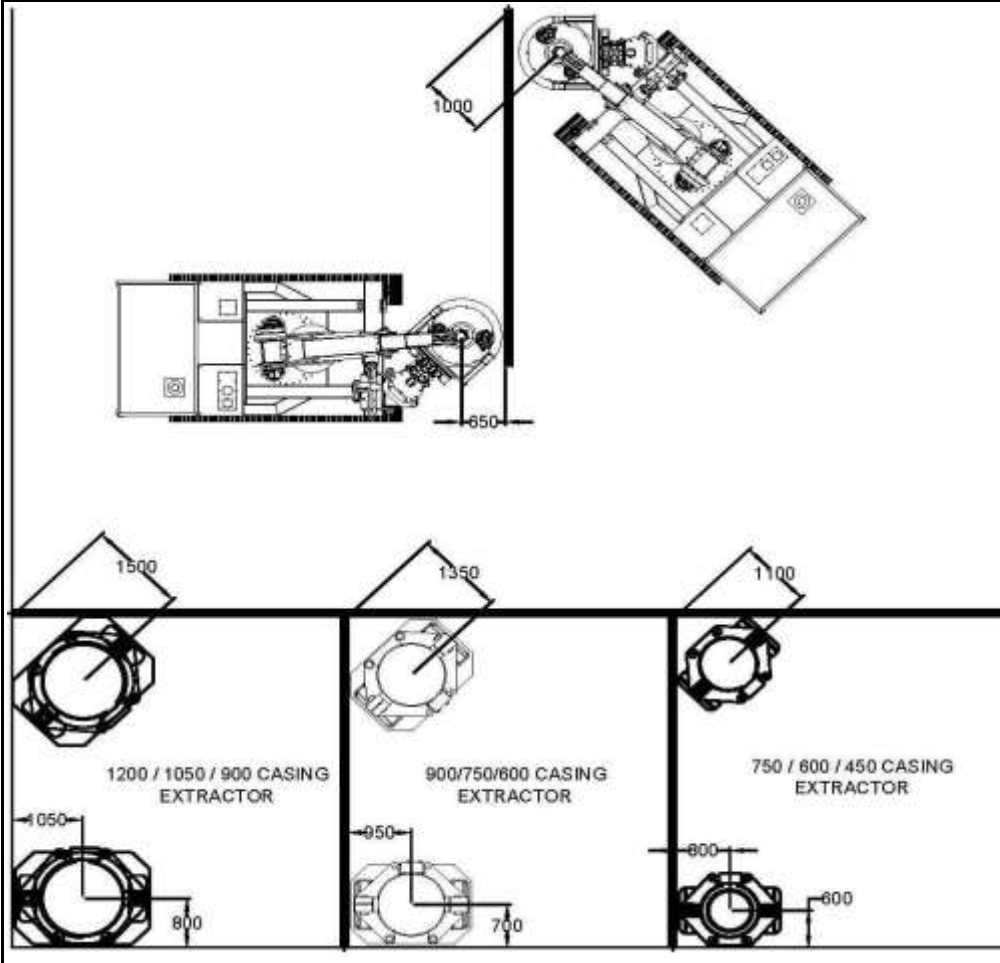


MP4004 - Rotary Bored Piling Rig



A Track Wheel Centres	2688 mm	H Ground Clearance	430 mm
B Overall Track Length	3420 mm	I Width Over Tracks	2390 mm
C CL To Rear Of Machine	2580 mm	J Minimum Operating Height	3500 mm
D C*Weight Ground Clearance	875 mm	J Maximum Operating Height	6750 mm
E Height Of Base Machine	3200 mm	J Machine Height As Shown	4650 mm
F Upperworks Width	2200 mm	K Overall Length Of Machine	5750 mm
G Track Pad Width	500 mm	* Tail-Swing Radius	2760 mm

Operating Weight 19250 kg Pile Diameters Available 450 / 600 / 750 / 900 / 1050

Note:- Detailed dimensions / CAD drawings available on request